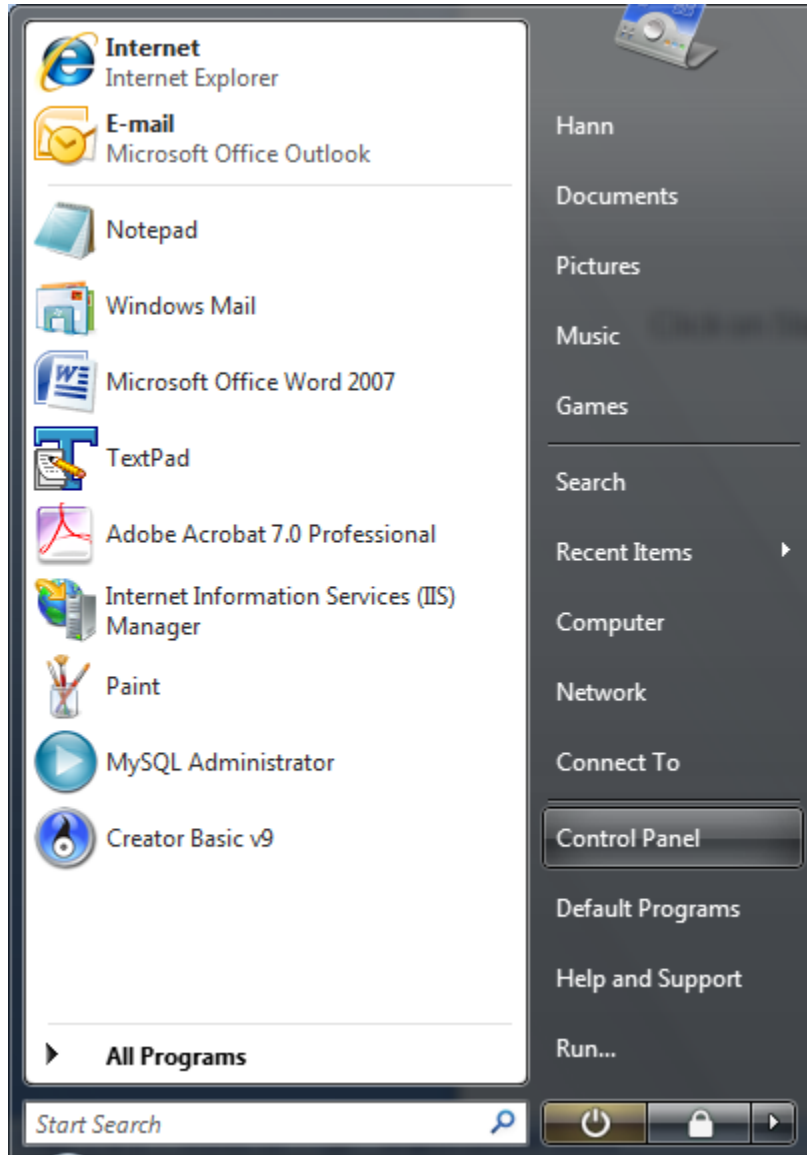


# Install Khmer Keyboard on Windows Vista

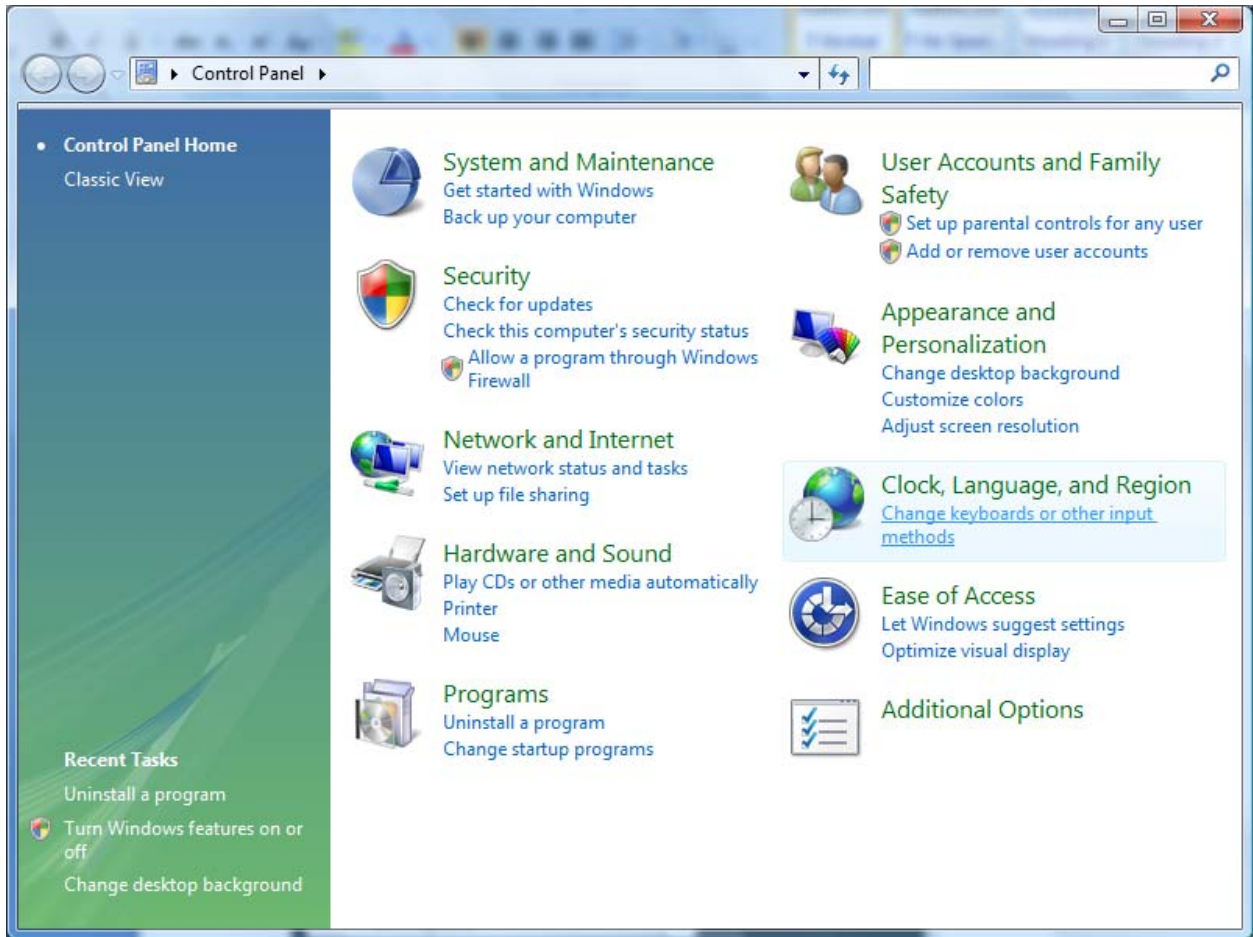
By

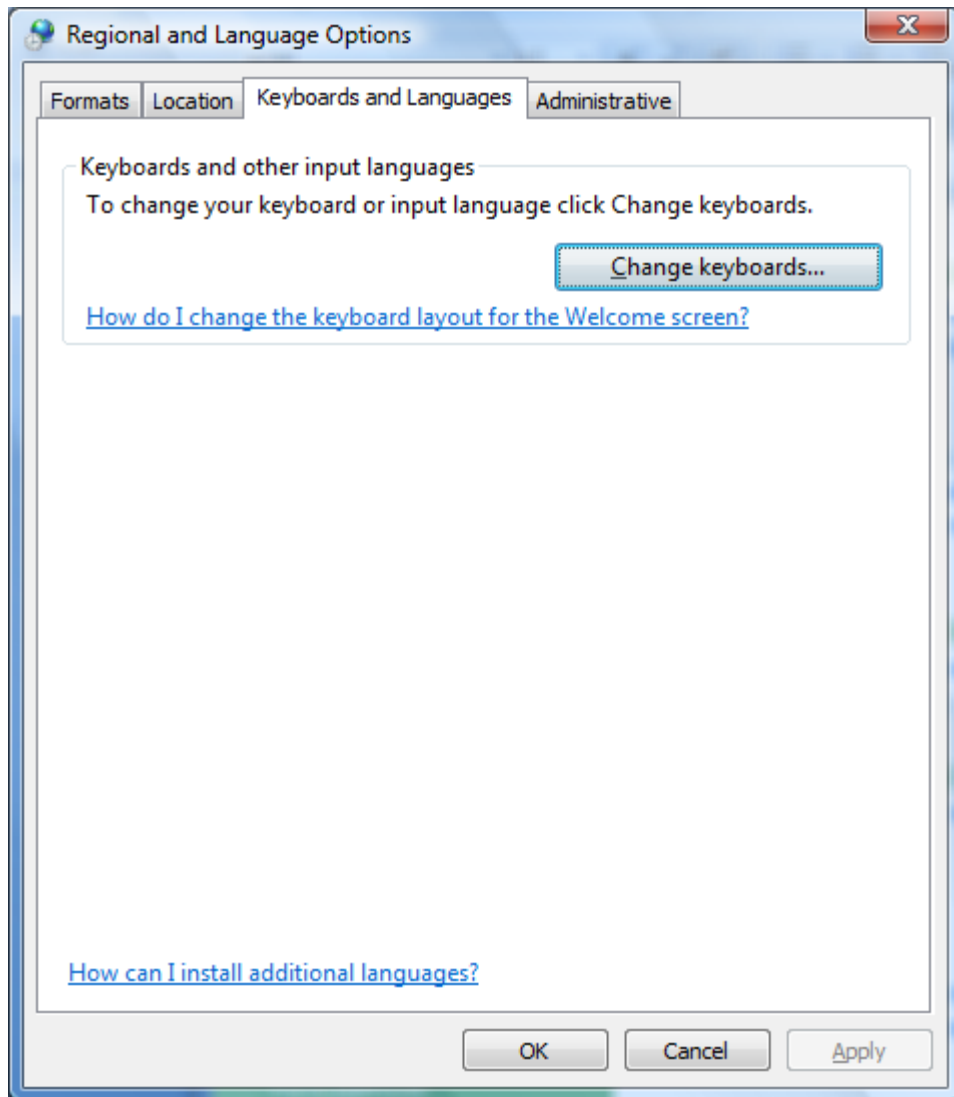
Hann So

Click on Start, Control Panel



Select Clock, Language and Region



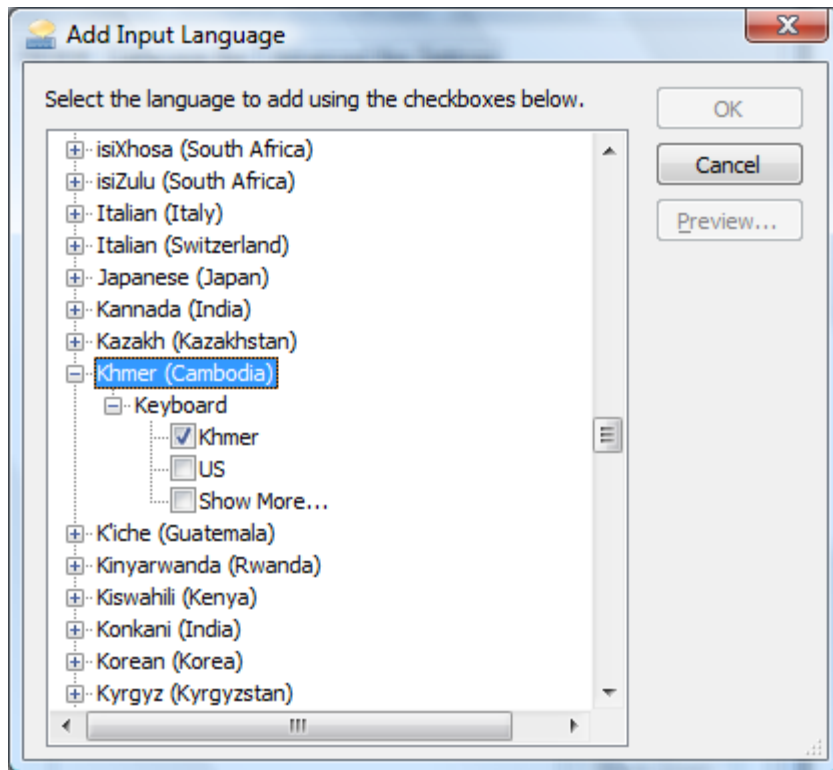


Click on Change Keyboards

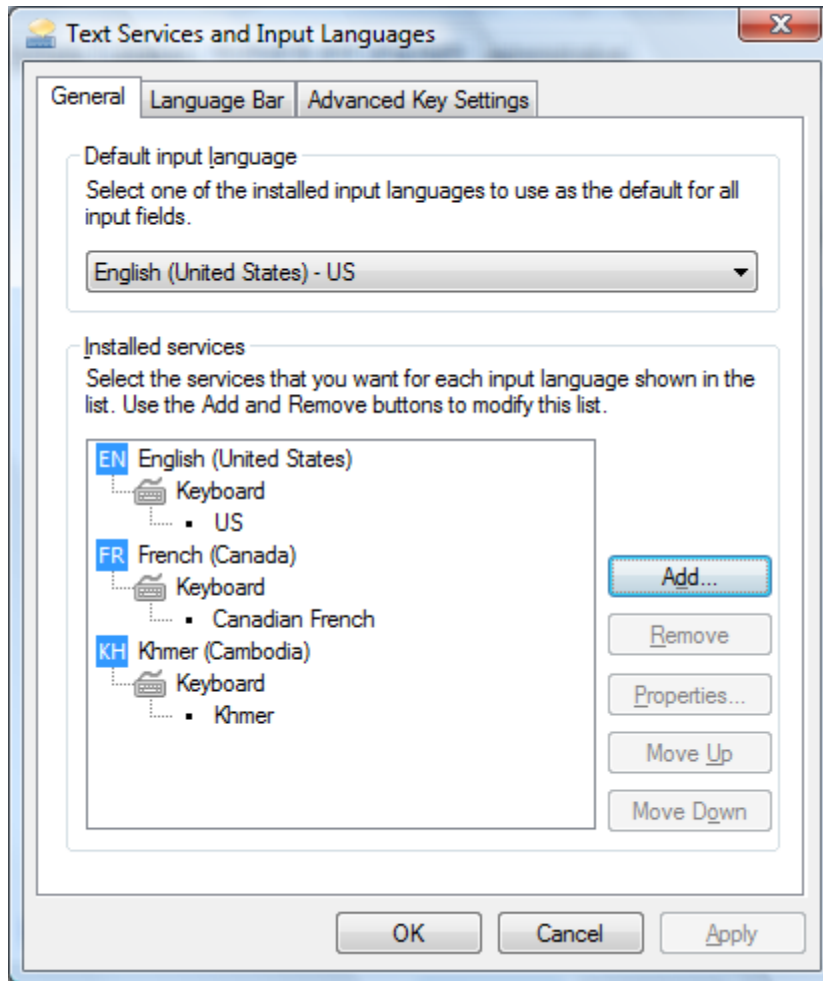
Click on Add

Select Khmer

Click on OK



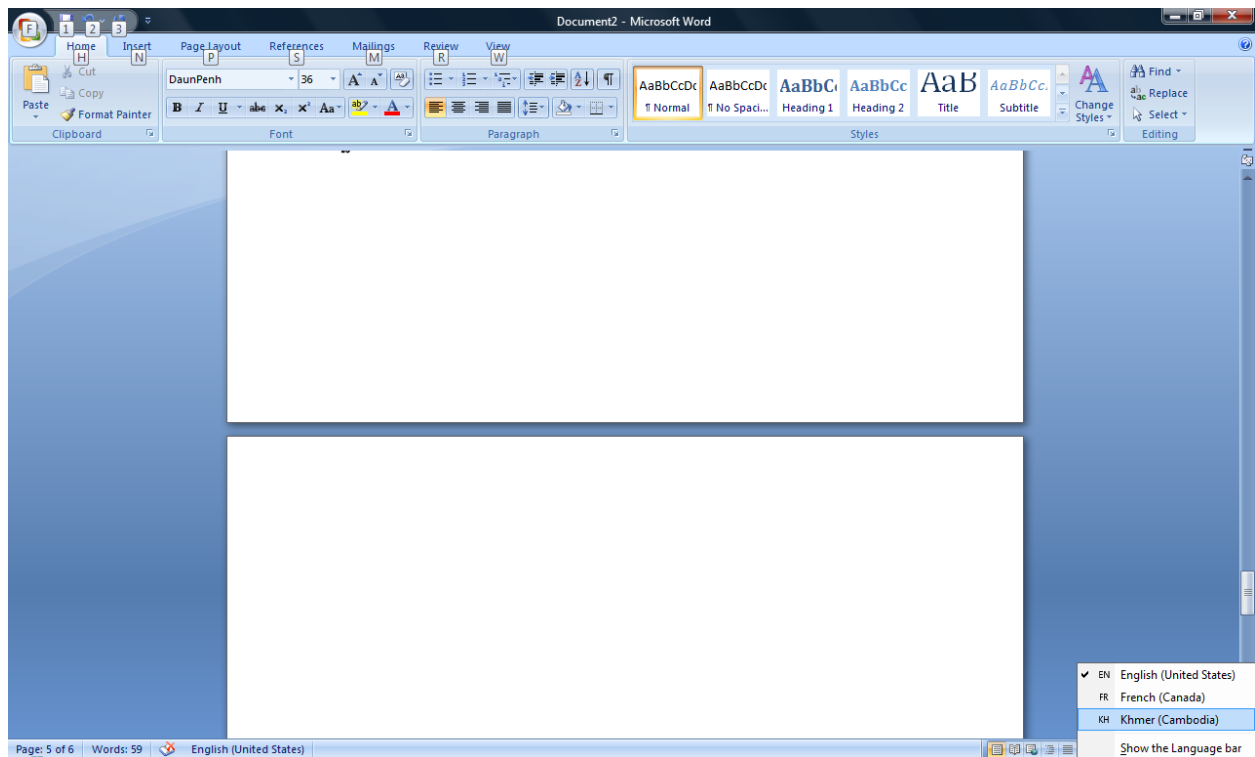
You should see the Khmer keyboard added



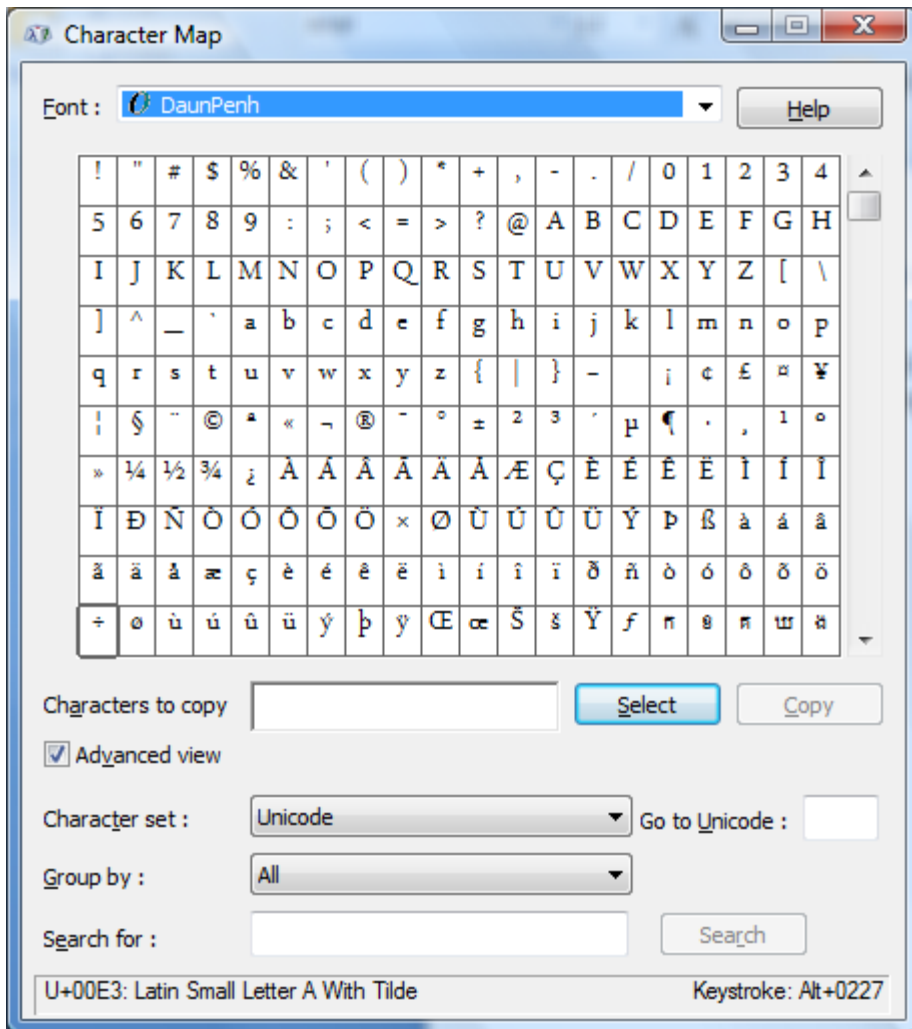
Now you're ready to use the Khmer font.

Open Word 2007. Switch the keyboard to KH (Khmer). Select the DaunPenh font and 36pts.

ស្រួល  
្រ



Open Character Map by clicking the **Start** button, clicking **All Programs**, clicking **Accessories**, clicking **System Tools**, and then clicking **Character Map**.



Character Map

Font: DaunPenh

Help

÷	ø	ù	ú	û	ü	ý	þ	ÿ	Œ	œ	Š	š	Ÿ	ƒ	κ	ø	κ	ω	κ
ច	គ	ឃ	ឈ	ញ	ដ	ឝ	ឞ	ស	ណ	ក	ច	ឝ	ឞ	ស	ប	ផ	ព	ក	ម
ឃ	រ	ល	រ	គ	ម	ល	ហ	ឡ	អ	អ	អ	អ	ឡ	ឡ	ឡ	ឡ	ឡ	ឡ	ឡ
ឡ	ឡ	ឡ	ឡ	ឡ	ឡ	ឡ	ឡ	ឡ	ឡ	ឡ	ឡ	ឡ	ឡ	ឡ	ឡ	ឡ	ឡ	ឡ	ឡ
្ក	្ខ	្គ	្ឃ	្ង	្ច	្ឆ	្ជ	្ឈ	្ញ	្ដ	្ឋ	្ឌ	្ឍ	្ណ	្ត	្ថ	្ទ	្ធ	្ន
្ប	្ផ	្ព	្ភ	្ម	្យ	្រ	្ល	្វ	្ឝ	្ឞ	្ស	្ហ	្ឡ	្អ	្ឣ	្ឤ	្ឥ	្ឦ	្ឧ
្ឨ	្ឩ	្ឪ	្ឫ	្ឬ	្ឭ	្ឮ	្ឯ	្ឰ	្ឱ	្ឲ	្ឳ	្឴	្឵	្ា	្ិ	្ី	្ឹ	្ឺ	្ុ
្ួ	្ើ	្ឿ	្ឺ	្ុ	្ូ	្ួ	្ើ	្ឿ	្ឺ	្ុ	្ូ	្ួ	្ើ	្ឿ	្ឺ	្ុ	្ូ	្ួ	្ើ
្ឿ			—	—	'	'	'	'	'	'	'	'	'	'	'	'	'	'	'
™	®	©																	

Characters to copy

Select

Copy

Advanced view

Character set:

Unicode

Go to Unicode:

Group by:

All

Search for:

Search

U+1785: Khmer Letter Ca



### Khmer Keyboard Layout in Word 2007

`	1	2	3	4	5	6	7	8	9	0	-	=
	១	២	៣	៤	៥	៦	៧	៨	៩	០	-	=

~	!	@	#	\$	%	^	&	*	(	)	_	+
	!	ៗ	៉	៛	៉	៉	៉	៉	៉	៉	_	+

q	w	e	r	t	y	u	i	o	p	[	]	\
ភ	៉	ៃ	រ	ត	យ	ុ	ិ	ោ	ផ	ើ	ៀ	\

a	s	d	f	g	h	j	k	l	;	'		
ា	ស	ដ	ផ	ង	ហ	ញ	ក	ល	:	ុ		

z	x	c	v	b	n	m	,	.	/			
ប	ខ	ច	វ	ប	ន	ម	អ	។				

{	}		:	“	<	>	?					
ោៈ	ៀ	/	ៈ	៉	,	.	?					

**Shift**

Q	W	E	R	T	Y	U	I	O	P			
យ	៉	ៃ	រ	ត	យ	ុ	ិ	ោ	ភ	ោៈ	ៀ	/

A	S	D	F	G	H	J	K	L				
ៃ	ាំ	ឌ	ឍ	ុំ	ុំ	ុំ	គី	ឡ	៖	៉		

Z	X	C	V	B	N	M						
ង	យ	ជ	ៃ	ព	ណ	ំ	,	.	?			

Select KH (Khmer) on the Task bar at the bottom right. Select DaunPenh as font and 36pts. Hit space bar and the appropriate letter below.

q	Q	w	W	e	E	r	R	t	T
ុំ	ុំ	ុំ	ុំ	ុំ	ុំ	ុំ	ុំ	ុំ	ុំ

y	Y	u	U	i	I	o	O	p	P
ុំ	ុំ	ុំ	ុំ	ុំ	ុំ	ុំ	ុំ	ុំ	ុំ

[	]	{	}	\	
ុំ	ុំ	ុំ	ុំ	ុំ	ុំ

a	A	s	S	d	D	f	F	g	G	h	H
---	---	---	---	---	---	---	---	---	---	---	---



